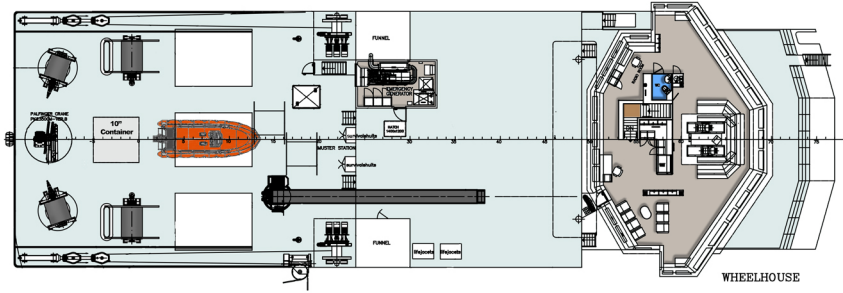
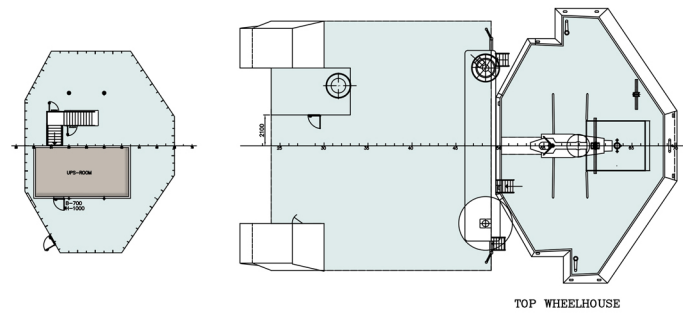
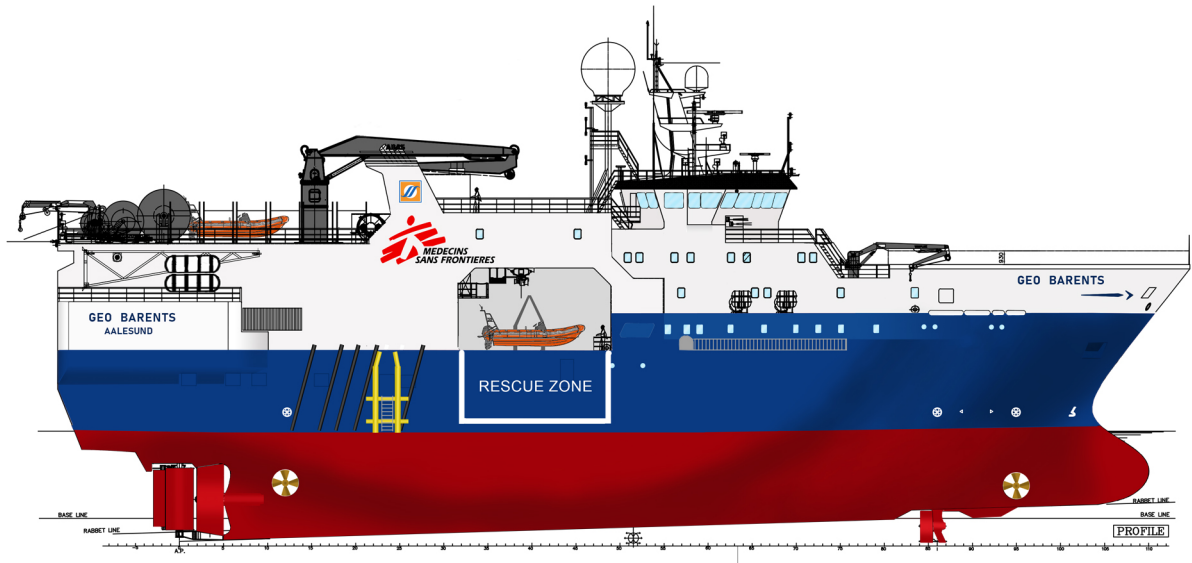
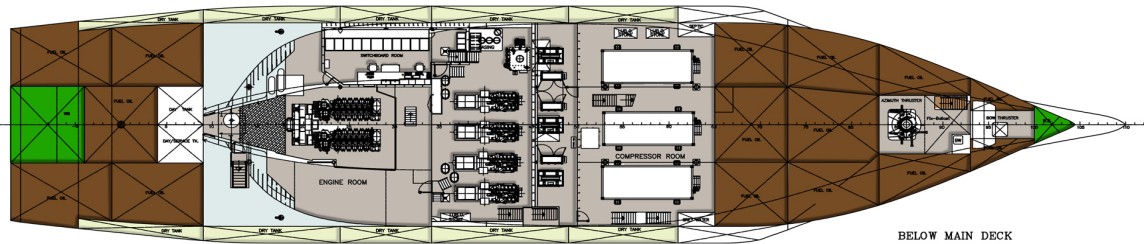
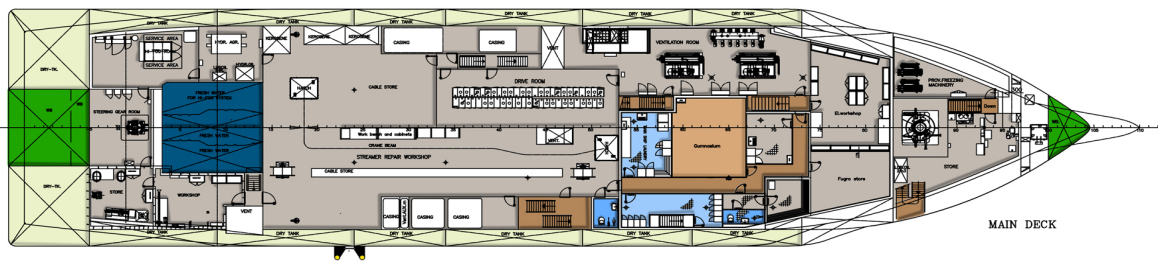
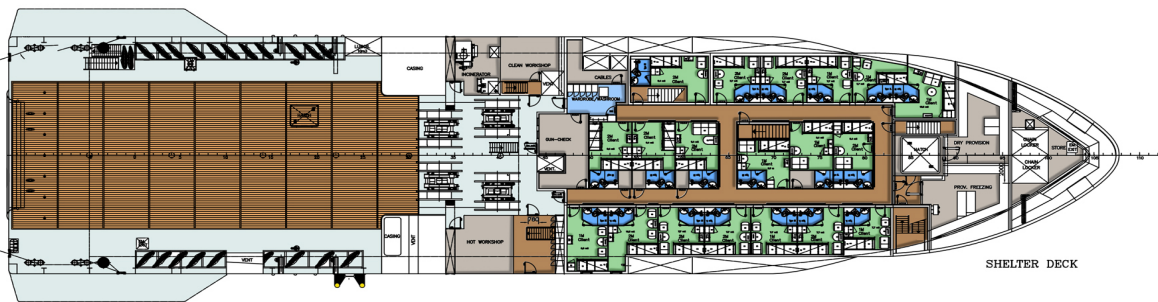
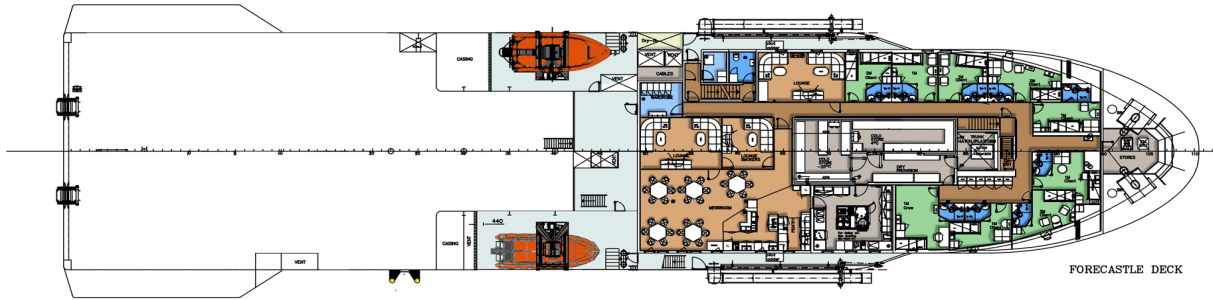
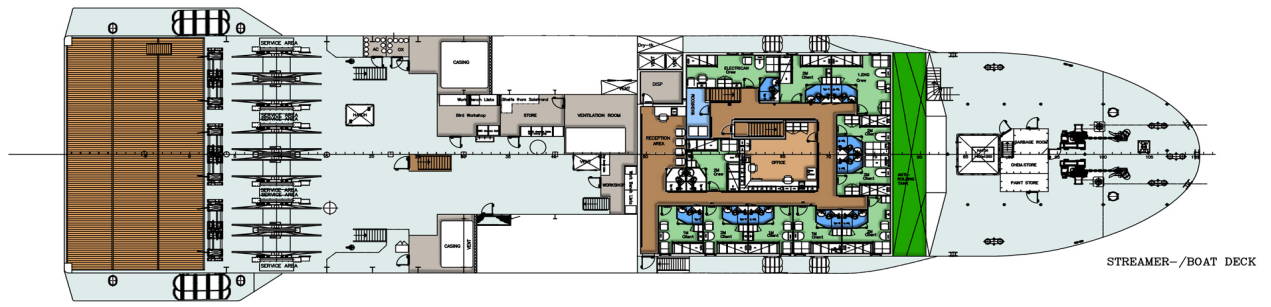




GEO BARENTS





GEO BARENTS

CONTACT INFORMATION

Manager	Uksnøy & Co AS
Owner	Uksnøy Barents KS
IMO number	9252503
Call Sign	LAKK6
MMSI	258 826 000

REGISTRATION DETAILS

Built at	Solstrand Verft A/S
Nationality	Norwegian
Port of registry	Ålesund
Year	2007
Type	Standby Rescue Vessel
GTR	4,979

GENERAL INFORMATION

Class	BUREAU VERITAS
Class Notation	I H HULL M MACH Special service - Standby rescue vessel (300 survivors, Mediterranean sea) Unrestricted navigation COMF-VIB 3, A AUT-UMS, SDS, A AVM-APS
Flag	Norway International Register

PRINCIPAL PARTICULARS

Loa	76.95 m
Lpp	61.8 m
Beam	17.0 m (21.0 m)
Draft max	8.8 m

VESSEL CAPACITIES

Fuel MGO	900 m ³
Fresh water	90 m ³
Ballast Water	407 m ³
Helicopter Deck	Max. "D" 19,5m. Max. take-off weight "t" 9,3t
Fresh water makers	1 x Alfa Laval Evaporator 2 x ENWA Inverse Osmosis Capacity: 2 x 15 m ³ per 24hr

FUEL CONSUMPTION

Idle in port	1.5m ³ Cbm MGO per 24hr
While anchor	3 m ³ Cbm MGO per 24hr
stby at location	5 m ³ Cbm MGO per 24hr
Max transit speed	14,5 knots

ACCOMMODATION

Single cabins	9
Double cabins	36
Total berths	83
Pax	50
Survivors	300
Crew	33
Hospital	1
Gymnasium	1
Sauna	1
Lounges	2
Conference Room	1
Smokers Lounge	1

GEO BARENTS

ACCOMMODATION CONTINUES

Endurance	±8 weeks with max passengers
Offices	3 for Clients - with 27 Desks

MACHINERY PROPULSION

Auxiliary engine	4 x Cummins 1291 kW each
Total Auxiliary Engine	5164 KW capacity
Retractable azimuth	Brunvoll LNC-1650 - 882 kW
Tunnel thruster - forward	Brunvoll LTC-1750 - 647 kW
Tunnel thruster - aft	Brunvoll LTC-1750 - 647 kW
Propeller, CP	Finnøy P105
Propulsion engine P	ABC - 12VDZC - 2652 kW
Propulsion engine S	ABC - 12VDZC - 2652 kW
Total propulsion power	5304 KW
Propulsion reduction gear	Finnøy 2G 110/70
Steering gear	Tenfjord High Lift rudder

DECK EQUIPMENT

Deck Cranes	Triplex KN-16 SWL 2 Tonn. Max outreach 9m, ABAS KDE 150 - SWL 4 Tonn, Max outreach 18m LB PALLFINGER MARINE, PK 23500 MB. SWL 1,8 Tonn
Davits	VESTDAVIT, Max load SWL 10 Tonn MacGregor, SWL 4 Tonn
Capstan	4 x SC PROMEX, rated pull 82.2 KN
MOB boat	Springer MP741 2 x RHIB - WHR 785 Industrial

NAVIGATION EQUIPMENT

Radars (4)	Furuno Far 2137 ARPA, S-Band Furuno Far 2117 ARPA, X-Band NAVnet 3D Radar, DRSOPEN NAVnet 3D Radar, DRSOPEN
GPS Navigation	Furuno, GP-170 GPS
Echo Sounders	Kongsberg EA 600 Furuno, FE-700
Gyro Compass	2 x Anschutz, Standard 22, Octans
Magnetic Compass	WHEELMARK
Auto Pilot Fwd	Anschutz, Pilotstar D
Auto Pilot	KONGSBERG C-Joy
Dual ECDIS - Electronic Chart	Telchart, T 202G, C-map

COMMUNICATION EQUIPMENT

MF / HF Radio	Furuno FS 1570
VHF Radio	2 x Furuno FM-8800D
Helicopter VHF Radio	2 x Jotron, TR-710
Sat-C	2 x Furuno, Felcom 15
AIS	Furuno, FA-150
V-SAT	WIFI/Internet - All around the vessel
EPIRB	Jotron, Tron SX, Jotron, Tron 40 S

ALL SPECIFICATIONS GIVEN ARE WITHOUT GUARENTEE AND SUBJECT TO CHANGE.



Uksnøy & Co AS

Keiser Wilhelms gate 34

NO-6003 Ålesund

Norway

Tel.: +47 70 21 47 80

www.uksnoy.no